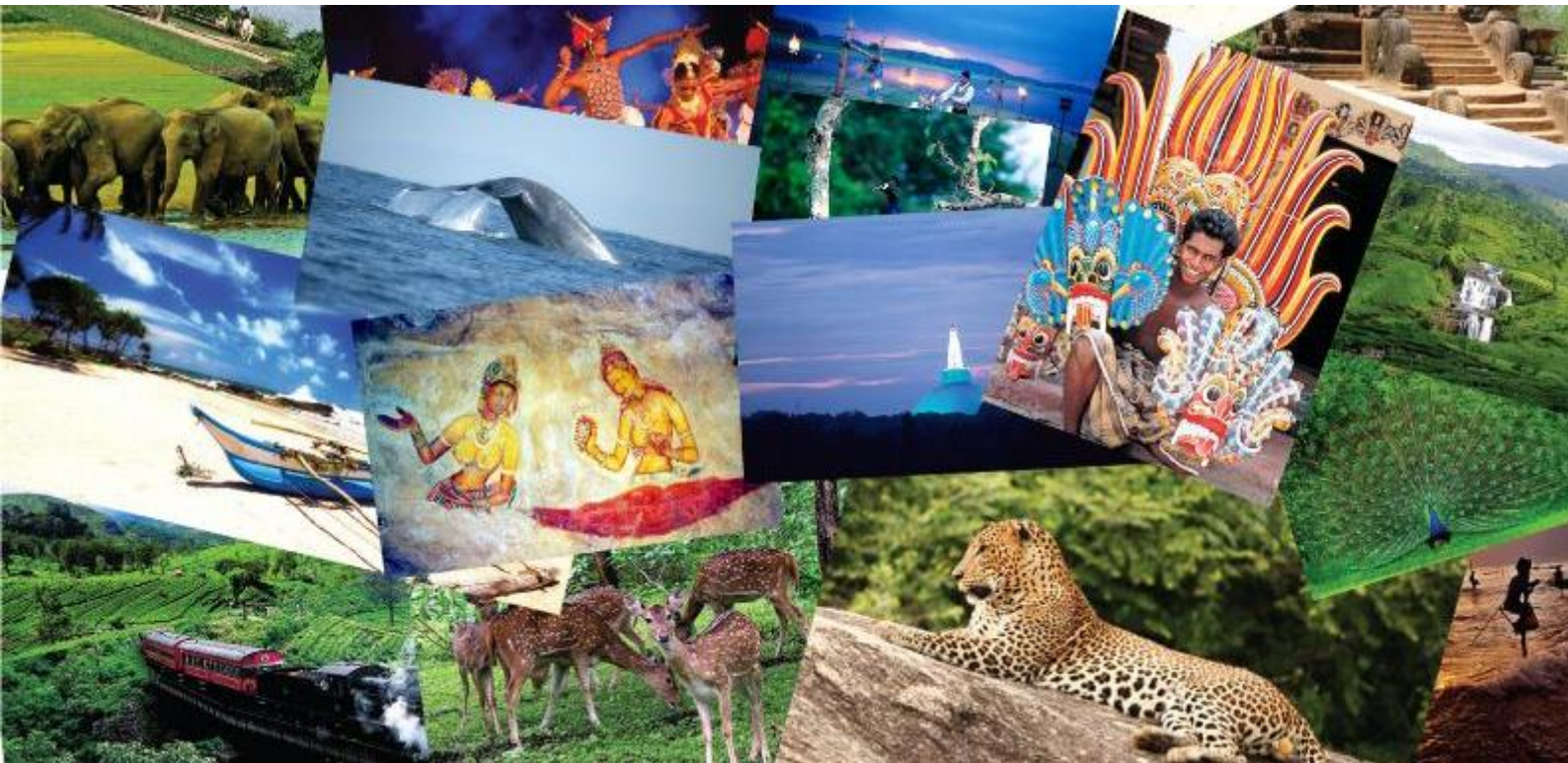


## **REFRESHING SRI LANKAN EXPERIENCE**

**A Journey that is Over Flowing with The Best of What the Island has to Offer!**



## **THE ISLE OF SERENDIPITY**

---

This extraordinary island set in the Indian Ocean, off the south-eastern tip of India, has thousands of years of diverse culture. Still a predominantly Buddhist country, it also has strong Hindu, Christian and Muslim communities as well. Incredibly fertile and a great producer of exotic fruits and it was for centuries the spice producer of the world famous and incredibly picturesque hill country. With a strong cultural past that now offers over 7 UN World Heritage sites, Sri Lanka was once one of the richest countries in Asia. In recent times it has not developed at the dramatic pace of its neighbours' in the region adding to its charm and character. The relative lack of development and gentle island pace make Sri Lanka the perfect destination for those looking for a varied and stimulating holiday. From beautiful beaches, unbelievable flora and fauna (much endemic), amazing architecture as well as a vast amount of historical & religious sites, white water rafting, cycling and many other adventures for the more active and finally the friendliest of people who carry infectious smiles with them every day!

Whatever you are looking for in Sri Lanka, it is an island of immense beauty, small enough to explore widely in 10 to 15 days yet large enough to offer infinite variety.

### **THE FACTS**

---

- ✓ Population 21 million
- ✓ 3 main languages - Sinhala, Tamil and English.
- ✓ Buddhist majority (70%), with Hindu, Christian and Muslim minorities.
- ✓ Gained independence from Britain in 1948
- ✓ Democratic Socialist Republic since 1978
- ✓ The top exports are: Tea, Textiles, Gems & Foreign Remittances

### **THE TRIVIA**

---

- ✓ Has the highest concentration of Leopard in the world
- ✓ 7 of the world's UN World Heritage Sites
- ✓ Is one of the world's 25 Biodiversity Hot Spots
- ✓ World's 3<sup>rd</sup> largest tea producer
- ✓ The Sinhalese name, Sri Lanka, means, "The Resplendent Land" or "Holy Ceylon."
- ✓ Is famous for its Ceylonese Sapphire
- ✓ Has 1,340km of tropical coastline

### **OUR FAVOURITE THINGS TO DO:**

---

1. Enjoy a refreshingly hydrating king coconut known as 'Thambili' in Sri Lanka.
2. Keep your camera's on hand to snap amazing pictures of all the beautiful scenery across the island.
3. By the beach, dig your toes into the sand or in the hills, sip on our famous Ceylon tea.

### **OUR FAVOURITE THINGS TO EAT:**

---

1. Eat the freshest chilli crab with your feet in the sand under the stars by the Indian Ocean
2. An egg hopper for breakfast with seeni sambol! Watch out of the 'kata sambol' - it's a definite challenge (spicy wise)
3. Buffalo Curd & Treacle - start and you won't be able to stop!
4. Cashew nut curry – so rich and creamy you will never forget it

### **OUR FAVOURITE THINGS TO BUY:**

---

1. Hand woven Sarongs from Barefoot - they have the most incredible selection in the brightest of colours and are reasonably priced. Great gifts if you can bare to give them away.
2. A bottle of local brew called ARRACK ...a daring drink for the adventurous.
3. Cashew nuts from Kadjugama
4. Plenty of the best Ceylon tea to continually remind you of this amazing island and to give to those who missed the opportunity to visit Sri Lanka

---

**SRI LANKA - 10 NIGHTS AND 11 DAYS**

---

**WELCOME TO SRI LANKA!**

---

**AIRPORT - COLOMBO, 30MNTS APPROX**

**(-/-/-)**

Day 01 Ayubowan! Once your Diethelm Travel Sri Lanka Representative meets you personally on arrival, you will be introduced to your chauffeur guide and then begin your journey to uncover the wonders of this island visit, feel and discover. Feel the vivacity of this island nation, bask in this emerald isle's intoxicating beauty and enjoy an extraordinary travel experience. Explore Sri Lanka's golden beaches, the glorious history, the rich wilderness and the bustling cosmopolitans and be amazed!

Today you arrive on our Paradise isle and proceed to Colombo.

Colombo, is Sri Lanka's commercial capital and major port. A fine amalgamation of all the hues and cultures within this paradise isle. This chic metropolitan brings together the many facets of this island nation.

Overnight stay at Cinnamon Lake Colombo 5\*.

Meals included: Breakfast.

---

**COLOMBO - PINNAWALA - DAMBULLA, 3HRS 30MINS APPROX,**

**(B/-/-)**

Day 02 Today after breakfast proceed to Dambulla, en-route visit Pinnawala Elephant Orphanage.

Pinnawala Elephant Orphanage, located 13 km northwest of Kegalle towards Kandy, is famous because of the elephant orphanage located in the area. It is a must-visit as it would definitely add an unforgettable experience to your stay in this paradise isle.

Cultural Triangle, bears the nucleus of Sri Lanka's history and spanning over the historically significant cities of Anuradhapura, Polonnaruwa and Sigiriya, the enchanting sites within the triangle's boundaries that date back to 4th century B. C.

Overnight stay at Jetwing Lake Dambulla 5\*

Meals included: Breakfast.

---

**DAMBULLA - CAVE TEMPLE & MINNERIYA - DAMBULLA, 01HR APPROX,**

**(B/-/-)**

Day 03 Today after breakfast visit Dambulla Cave Temple and do Minneriya National Park Safari for half day.

Dambulla Cave temple, a complex that lies atop a massive hill on the edge of the town is one of the eight UNESCO world heritage sites in the country and is renowned for its unique sculptures and the largest mural paintings.

Minneriya National Park, shelters some of the greatest wildlife treasures of this paradise isle. The 'Sixth Greatest Wildlife Spectacle of the World' – the amazing phenomenon of the 'Minneriya Elephant gathering' that occurs during end of summer.

Overnight stay at Jetwing Lake Dambulla 5\*

Meals included: Breakfast

**DAMBULLA - MATALE - KANDY, 03HRS APPROX**

**(B/-/-)**

Day 04 Today after breakfast proceed to Kandy, en-route visit Spice Garden and visit Temple of Tooth Relic.

Spice Gardens, located in Matale offer wonderful opportunities to view the spices that stirred the interests of many nations, since time immemorial, in this emerald isle for its exotic spices, world over.

Kandy, referred as the hill capital, Sri Dalada Maligawa that houses the sacred tooth relic of Buddha remains the prime landmark. Apart from the ancient monuments, the delightful jumble of antique shops and the bustling market are places to visit.

Temple of the tooth relic of Lord Buddha, is the pride of Buddhists in Sri Lanka and world-over. The palace temple stands surrounded by a moat, its golden roof gleaming in the sunlight as white-clad pilgrims bearing lotus blossoms throng to worship.

Overnight stay at Topaz Kandy 4 \*

Meals included: Breakfast

**KANDY - KANDY CITY TOUR - KANDY,**

**(B/-/-)**

Day 05 Today after breakfast do Kandy city tour and site seeing, en-route visit Peradeniya Botanical garden.

Witness a Kandyan Dance show; Kandyan dance shows, mostly dramatic depictions of the movements of birds, animals and the costumes donned by the dancers are vibrant with colour and sounds. The performances of the Kandyan dancers are an absolute must-see in Sri Lanka.

Peradeniya Botanical Gardens, although its origins date back to the era of medieval times, bears a rich history punctuated by colonialism and industrial change. The splendour of the gardens, further uplifted by the river that flows through its fringes.

Overnight stay at Topaz Kandy 4 \*

Meals included: Breakfast

**KANDY - NUWARA ELIYA, 02HRS 30MINS APPROX**

**(B/-/-)**

Day 06 Today after breakfast proceed to Nuwara Eliya, en-route visit a Tea Factory and Tea plantation.

Nuwara Eliya, dubbed the 'Little England of Sri Lanka' is located in the thick, misty hills of this paradise isle. The colonial atmosphere remains preserved, resembles a British countryside complete with rose gardens, hedges and red-roofed bungalows.

Tea of Sri Lanka, better known as Ceylon Tea has been world renowned for centuries for its quality and distinctive taste. The island's tea production varies in taste, quality, character and appearance based on its cultivated region.

Overnight stay at Blackpool Hotel Nuwara Eliya

Meals included: Breakfast.

**NUWARA ELIYA - LEISURE,**

**(B/-/-)**

Day 07 Today after breakfast time for leisure at Nuwara Eliya.

Full day leisure at Nuwara Eliya.

Overnight stay at Blackpool Hotel Nuwara Eliya 4\*

Meals included: Breakfast.

**NUWARA ELIYA - YALA VIA HAPUTALE, 04HRS 30MNTS APPROX**

**(B/-/-)**

Day 08 Today after breakfast proceed to Yala, en-route to do half day Yala National Park safari.

Yala National Park, its magnificent sights of majestic elephants, fine-feathered peacocks, great black bears and agile leopards that steal away into the shadows of the thick foliage are unparalleled to any of the national parks in the country.

Evening leisure at hotel.

Overnight stay at Jetwing Yala Hotel 5\*

Meals included: Breakfast

**YALA - BALAPITTIYA - KOSGODA – BENTOTA , 05HRS APPROX**

**(B/-/-)**

- Day 09 Today after breakfast proceed to Bentota, en-route visit Kosgoda Turtle Hatchery.
- Madu-ganga River Zone, a beautiful river that is the second largest wetland in the country. Brimming with a rich eco-system nourished by the shallow water body, consists of two main islands and close to 30 islets and provides shelter to over 200 families.
- Kosgoda Turtle Hatchery, in the south, established in 1981, was one of the earliest attempts to safeguard local turtles from extinction. Managed by the Sri Lanka Wildlife Protection Society, the hatchery offers a wildlife experience of a different sort.
- Overnight stay at Avani Bentota Hotel 4\*
- Meals included: Breakfast.

**BENTOTA - LEISURE,**

**(B/-/-)**

- Day 10 Today after breakfast time for leisure at beach.
- Full day leisure at beach.
- Overnight stay at Avani Bentota Hotel 4\*
- Meals included: Breakfast

**BENTOTA - COLOMBO AIRPORT, 03HRS APPROX**

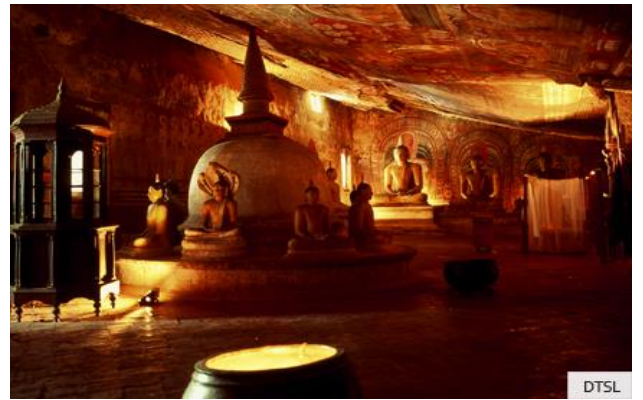
**(B/-/-)**

- Day 11 Today after breakfast transfer to the Airport for departure flight with memories to Cherish.

**“WE WISH YOU AN ENJOYABLE JOURNEY & HOPE TO SEE YOU BACK WITH ANOTHER EXCITING TOUR IN SRI LANKA”**



Colombo



Dambulla Cave Temple



Minneriya National Park.



Pinnawala Elephant Orphanage



Kandy City



Tea Plantation Nuwara Eliya.



Peradeniya Botanical Garden



Yala National Park Safari



Beruwala



Leisure at beach.



Turtle Hatchery.



Madu River



**TOUR PRICE - TILL 15<sup>TH</sup> DECEMBER 2018**

<b>PAX</b>	<b>1 Guest</b>	<b>2 Guests</b>	<b>3-4 Guests</b>	<b>5-6 Guests</b>	<b>Single room supplement</b>	<b>Triple room reduction</b>
<b>PER PERSON SHARING DBL/TWIN ON BB BASIS</b>	<b>1687</b>	<b>942</b>	<b>890</b>	<b>765</b>	<b>400</b>	<b>60</b>

**OUR TOUR PRICES ARE INCLUSIVE OF**

- Accommodation in shared DBL room with private bathroom
- Meals are as stated in the programme B= breakfast,
- Transfers and tours with local English-speaking driver guide in private air-conditioned vehicles

**NOT INCLUDED ARE**

- **All entrance fees and boat fees as mentioned in the programme**
- Domestic airfare (quoted separately, if requested)
- Peak period supplements
- International airfare to / from Sri Lanka (quoted separately, if requested)
- Optional tours
- Surcharges for other language guides
- Surcharges for Christmas & New Year Eve
- Personal travel insurance
- Personal expenditure, such as drinks, souvenirs, laundry, camera fees, communications, postage, gratuities etc.
- Meals and services other than mentioned in the programme
- Drinks with meals
- Compulsory gala dinners during festive seasons and peak season surcharges which will be advised at the time of booking
- Electronic Travel Authorisation fee for Visas upon arrival (Please note that an ETA is compulsory for nationalities besides nationals from the Republics of Singapore and Maldives)
- Early check-in and late check-out at hotels, if not mentioned in the programme

**PAYMENTS BY CREDIT CARD**

- If the payments are made by credit card, the following charges will be added to your invoice value
- Payment facilitation fee locally - 2%
- On-line payment facilitation fee - 3.15%

**CANCELLATIONS**

- Before 21 days no cancellation.
- Between 21 – 14 days 50% cancellation of the total invoice value.
- Between 14 – 07 days 75% cancellation of the total invoice value.
- Less than 7 days 100% cancellation of the total invoice value.
- No shows & early departures 100% cancellation of the total invoice value
- Refunds will not be given for unused or cancelled services after the tour arrangements have commenced.

\*\*Certain Hotels impose stricter cancellation policies which will be advised separately.



**PLEASE NOTE**

- For air ticket reservations, we require the guests' full names AS THEY APPEAR IN THEIR PASSPORTS. Airfares and reservations are always subject to change until paid in full and ticketed.
- Airfares are subject to increase without prior notice.
- Please be advised that prices will be adjusted periodically in case of fuel price increase by our suppliers.
- This is a quotation only and neither reservations for services nor hotel bookings have been made.

**CONTACT INFORMATION OF DIETHELM TRAVEL OFFICE**

Colombo	<b>DIETHELM TRAVEL LANKA (PVT) LTD.</b>	East Wing, Level 6, Hemas House, 75, Braybrooke Place, Colombo 02 Telephone: +94 (0) 11 231 3131 / 11 470 4600 Fax: +94 (0) 11 230 0003 Email: sales@lk.diethelmtravel.com
---------	---	---

**EMERGENCY CONTACTS**

Customer Service Executive – Dilakshan	Mobile: +94 (0) 77 7674 667
Duty Manager – 24hr hotline	Mobile: +94 (0) 77 354 4435
Head of Operations – Asia	Mobile: +94 (0) 77 772 4141

**IMPORTANT NOTICE**

- Most Museums are closed on Sundays, Mondays and public holidays. Colombo National Museum is open all 7days a week except on public holidays.
- Certain parts of the tours on offer are provided by independent third parties, such as airlines, hotels, transport operators and local tourist offices. Diethelm Travel is therefore not responsible for any loss, injury or damage caused thereby to the tourists, including those occurring outside of the normal touring programmers. Additional expenses incurred due to delay, accident, natural disaster, political actions and unrest shall be borne by the tourists.
- We advise that due to frequent flight changes, delays and cancellations by the various domestic airlines and trains we cannot fully guarantee that the proposed itinerary can be carried out as planned. Based on our experience, changes of departure times and/ or cancellations can occur at very short notice even after confirmation of a flight has been received. The same applies for train travel: Schedule changes occur frequently; often without prior notification. In case of schedule changes or flight cancellations we always try everything possible to arrange an alternate programme within the framework of the original quoted costs. However, we reserve the right to charge any cost exceeding the original budget to the tour operator/ travel agent or to the participant of a tour after consultation with the agent.
- The visits to wild life parks will be at your own risk. The available jeeps are basic with basic insurance cover (not comprehensive as in the case of the vehicle which is used on the tour).
- In the event the road condition is unsuitable for the Tour vehicle to be used during a specific segment of the tour a basic alternate third party vehicle would be provided, no liability or insurance would cover such vehicles.

- Poya holidays are observed on the day of each full moon in general, Hindu and Buddhist festivals are declared according to local astronomical observations and it is often only possible to forecast the approximate time of their occurrence. On such days of religious reverence selling alcohol in public is illegal. However at certain hotels the room bars remain accessible.
  - Programmes, prices, services and conditions are based on those valid at the time of proposal submission and are subject to change thereafter without advance notice until all services have been paid in full.
  - We strongly advise to leave valuable items (money, passport, credit cards, jewellery, sensitive documents, laptop computer, etc.) in the hotel safe. During excursions and roundtrips, personal belongings, especially money and valuables should NEVER be left on vehicles, even during short breaks, and carried around at all times. Diethelm Travel Sri Lanka is not responsible for any loss or theft.
  - Due to ongoing rapid upgrades/developments of roadways and highways in Sri Lanka the times mentioned for transfers may take longer than estimated without prior notice.
  - **TRAVELLED WITH US?**
- 
- If you wish to give us some feedback about your holiday in Sri Lanka, please visit our website <http://www.diethelmtravel.com/srilanka> and go to "Travelled with us?"
  - Thank you in advance for your valuable thoughts and time. Your feedback will surely help us to continuously improve our products and services.